

AGTECH

Farm meets IoT to reach the most remote lands



A true story of technology innovation

The company

Originally founded in Honolulu, this large AgTech solution provider spans through the world covering millions of acres to connect farms and providing their customers with insights to optimize production processes to reduce food waste and create sustainable farming operations. Through quality data collection they solve major inefficiencies such as the lack of on-time accurate information that can make or break the yield and, therefore, all the hard work.

They came up with a solution to eliminate manual work in extensive lands and ensure clients visibility of the soil and crops to improve the irrigation system. That's where Webee steps in, solving connectivity issues, reaching even the most remote areas.

webee[®]

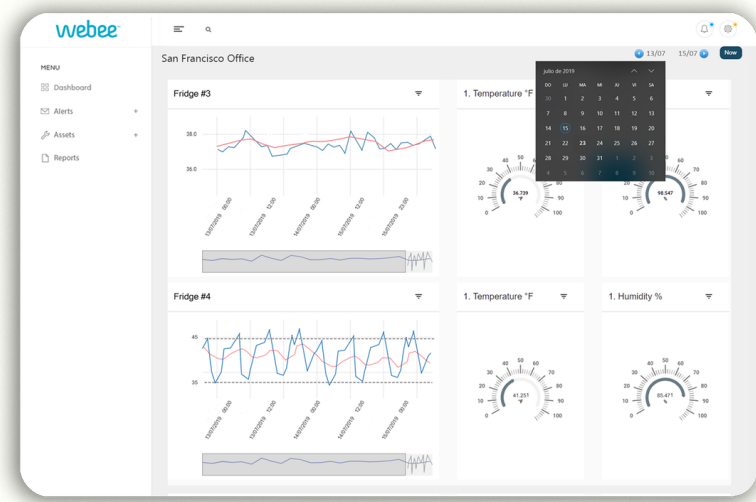
KEY RESULTS

IMPROVING IRRIGATION EFFICIENCY BY 99%

VISUALIZING TEMPERATURE, HUMIDITY AND SOIL MOISTURE IN REAL-TIME

SMS/E-MAIL ALERT SYSTEM FOR ANOMALY DETECTION

REDUCE IMPLEMENTATION TIMES TO DAYS



To the point

Our client needed a way to integrate what was already in place in their process: hardware and communication system. They just needed them to, in a way, speak the same language and to reach remote areas with no issues, so they could detect anomalies in time to make crop-saving decisions.

A new approach to a long-time challenge

Our client focuses on connecting farms and measuring soil conditions, ensuring they provide the best and most efficient solution to their clients. They needed to use technology to update their existing system so that when a sensor is found to have problems, they can notify and alert in real-time and make the decision to change the course of production and save the crop. They came up with an innovative solution to solve the problem but as they tested different IoT and communication platforms and trying different ways, it proved to be both expensive and inadequate for their needs. They needed to find a fast and agile way to connect the existing technology efficiently.



A VERY FITTING SOLUTION

Webee came in the picture with a solution for real-time temperature, humidity and soil moisture monitoring. By using the third-party hardware that was already in place and Sigfox's low-power communication system, we integrated all using our VIoT drag-and-drop no coding software.

Webee was able to complete the integration by adding a completely customizable, drag-and-drop Visual IoT software that requires no specialized engineers, speeding up deployment timelines. Also, Webee's solution is presented as a modular option, for the client to add to their own product.